



SOCIAL RESEARCH DEPARTMENT



...Connecting Plugs



About HLPPT

Hindustan Latex Family Planning Promotion Trust (**HLFPPT**) is a **not-for-profit** National organization promoted by HLL Lifecare Limited (a Mini Ratna enterprise, Government of India). It was founded in 1992 and is registered under the Travancore-Cochin Literary, Scientific and Charitable Societies Registration Act, 1955 and today stands as one of the leading Public Health Organisation in India with major development projects portfolio. It also has **80G, 12A**, ISO Certification and FCRA registration.

At Present, over **75+ active** projects are functional in 24 States and 04 UTs in India.



About the Department

The Department of Social Research and Development has established with an objective to provide **quality consultancy** and research inputs to development efforts of the **government institutions** and various allied agencies.

In the last couple of years, HLPPT has empanelled with **SIFPSA (Govt. of UP)** as a partner for Research and Consultancy agency.

Our Previous Research areas are, Family Planning, **Health & Nutrition**, Trainings, NCD & Mental Health, Impact Assessments, In-depth Studies, Baseline Survey to kick-off Projects, **Monitoring and Evaluation** etc



Our Research Framework



Scientific Thinking



Research Operations



Ethics Quality & Risk Management



Study & Site Management

Why to choose us

Add On Values

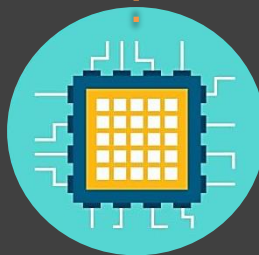
Trust Promoted by GoI PSU
Renowned, Tested and
Trusted in Industry
ISO Certified Company
Strong in Advocacy
Top Notch Leadership
Guidance



Partnership with over
250 Field NGOs in
various States



Human Resource with
over 250
Technical/Program
Professionals and more
than 2000+ field support



**Strong Grass Root
Presence** in 23 States
and 4 UTs with over 70
active projects



Outreach Network
of Over 12,000
Community Health
Volunteers



**In-House Thematic
Experts** of Healthcare,
Rural Development,
Marketing, Research and
Communication



Our Projects



Project: Maternal
Death Surveillance &
Response

Type: Impact
Assessment

Donor: SIFPSA-UP

Geography: Whole
Uttar Pradesh Districts



Project: New Born
Stabilisation Unit

Type: Impact
Assessment

Donor: SIFPSA-UP

Geography: Whole
Uttar Pradesh Districts



Project: Family
Planning Survey

Type: Assessment Study

Donor: National Health
Mission, Meghalaya

Geography: All Districts



Project: Awareness
generation on Preventive
Health focusing menstrual
health & hygiene

Type: Impact
Assessment

Donor: UNICEF, India

Geography: All Districts
of UP



Project: Mapping of Bio-
Medical inventory of Govt.
Healthcare facilities

Type: Mapping

Donor: HLL Lifecare Ltd

Geography: Pan India

Our Research Approach



Deductive Research Approach

- ✓ *Theory-hypothesis-observation/Test-confirmation/Rejection*

Inductive Research Approach

- ✓ *Observations/Tests-Pattern-Theory*

Adductive Research Approach

- ✓ *Based on Incomplete Observations-Surprising Facts*



Our Key Research Partners



Hindustan Latex Family Planning Promotion Trust (HLFPPT)

(A Trust Promoted by HLL Lifecare Ltd., Govt, of India Enterprises)

Corporate Office:

B-14A, 2nd Floor, Gautam Budh Nagar, Sector-62, Noida
Uttar Pradesh, Pin-201307

Ph- +91-0120-4673600, Mob- 9899889918

Email- mpahwa@hlfppt.org, akmitra@hlfppt.org

Webpage: www.hlppt.org

Contact Us



Be Social



Scan QR Code

